

AP2370 56-Port Analog VoIP Gateway



VoiceFinder AP2370 is a new cutting edge VoIP gateway supporting maximum 56 ports of analog voice interface and digital E1/T1 voice interface. Analog and digital interface of AP2370 provide an optimized call scenario when it interoperates with conventional PBX. Compact cost effective design and system architecture of AP2370 provides customer satisfaction in high quality, performance and system reliance. VoIP gateway combining IP-PBX is now suggesting a new model for a main voice communication solution. In order to be a part of advanced VoIP communications naturally in the future, making an excellent choice of choosing VoIP gateway is essential. VoiceFinder AP2370 is a Multi-Port VoIP gateway providing total 56 analog interface ports, and so on. It is suitable for general enterprises, large and public offices. It has functions as a media gateway which interoperates with IP-PBX and it enables to replace mid and large size analog PBX. Especially AP2370 provides an

optimized call scenario when it interoperates with conventional PBX. Compact cost effective design and system architecture of AP2370 provides customer satisfaction in high quality, performance and system reliance. VoIP gateway combining IP-PBX is now suggesting a new model for a main voice communication solution. In order to be a part of advanced VoIP communications naturally in the future, making an excellent choice of choosing VoIP gateway is essential. VoiceFinder AP2370 is a Multi-Port VoIP gateway providing total 56 analog interface ports, and so on. It is suitable for general enterprises, large and public offices. It has functions as a media gateway which interoperates with IP-PBX and it enables to replace mid and large size analog PBX. Especially AP2370 provides an optimal solution of VoIP communications in telephony environments that using telephone lines and PBX to get connect with a head office. AP2370 is designed to provide high-performance service as a media gateway. It provides LEDs on the front panel indicating operational status, line status, and LAN Interface status of gateway. Two of 10/100Mbps Fast Ethernet port and RS232C console interface are the base for delivering various network services such as LAN-to-LAN routing, Bridge and NAT/PAT service etc

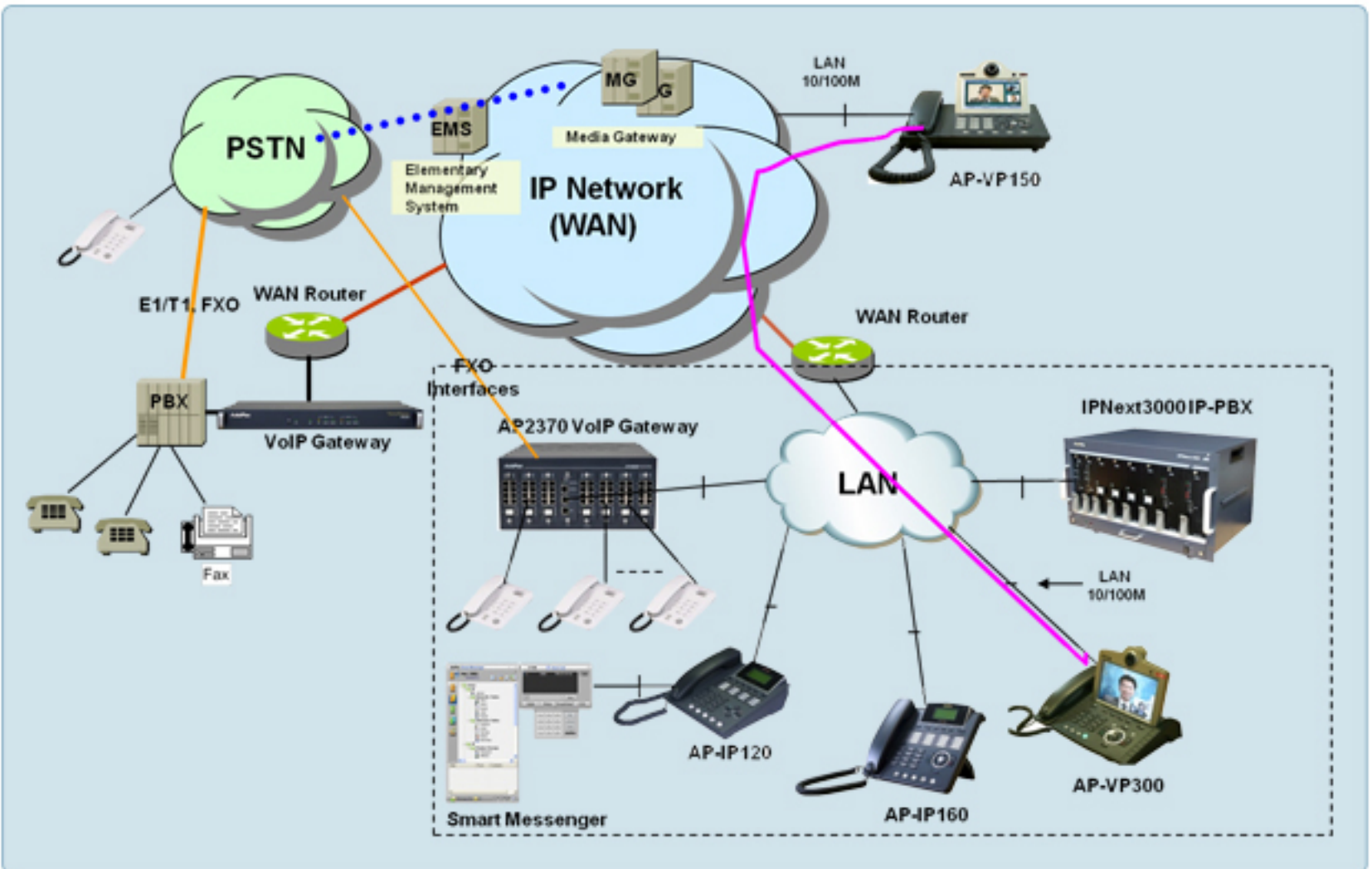
Major Feature

Overall Features

- H.323/SIP Dual Concurrent Stack Embedded
- High Performance RISC & Programmable DSP Architecture
- Seven(7) VoIP Module Slots : 8-Port VoIP Module
- Maximum 56-Port Analog VoIP Interface
- Two(2) 10/100Mbps Fast Ethernet (IP Share ,etc)
- High Performance LAN-to-LAN Routing Capability
- G.711/G.726/G.723/G.729, T.38 Fax , VAD, etc
- Powerful Network Protocols (PPPoE, DHCP, Static Routing, etc)
- Firmware Upgradeable Architecture
- Smart NMS for Large Scale Deployment
- Smart Web Manager for Management
- Advanced Voice QoS Mechanism
- Compact Design with Internal Power Supply



Network Diagram



Youtube



56-Port Analog VoIP Gateway
AP2370

AddPac Technology Co.,Ltd.

AddPac Texhnology (Korea-Head Office)
Phone +8225683848
Email sales@addpac.com